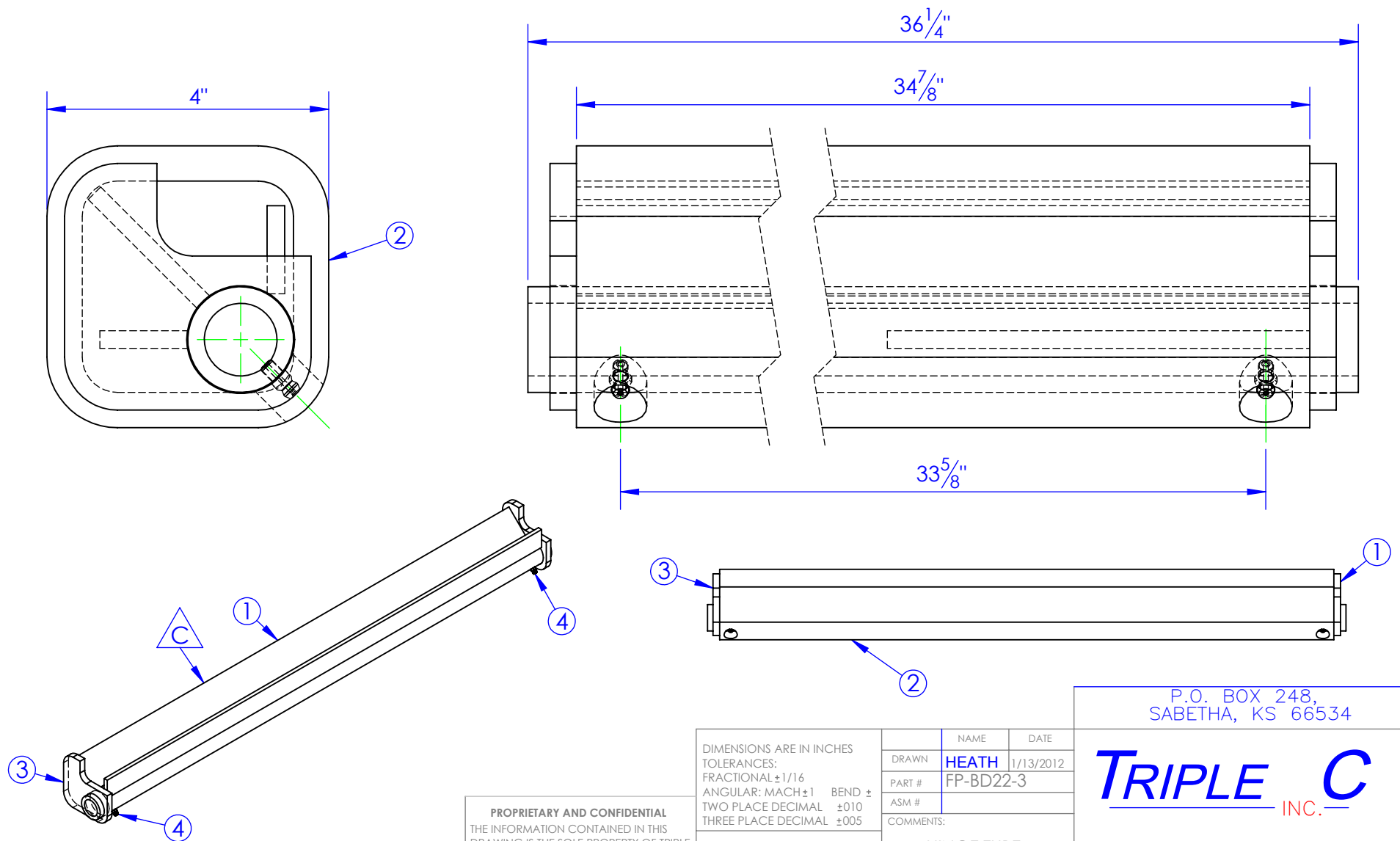


ITEM NO.	PART NUMBER	DESCRIPTION	MATERIAL	DRAWING #	Default /QTY.		REVISIONS		
1	FP-BD22-3B	HINGE TUBE, BD2200, WLDMENT		20-1120	1	REV.	DESCRIPTION	DATE	APPROVED
2	FP-BD22-3C	HINGE TUBE, BARE, BD2200	ST 4x1/2" L: 34-7/8"	20-1121	1	C	UPDATED TO MATCH 3D MODEL	1/13/2012	
3	FP-BD22-3A	END CAP, TUBE, HINGE, BD2200	3/8" HRS	20-2103	1				
4	HD-ZG .25-28 90	GREASE ZERK 1/4-28 STRAIGHT	STOCK	STOCK	2				



**PROPRIETARY AND CONFIDENTIAL**  
THE INFORMATION CONTAINED IN THIS  
DRAWING IS THE SOLE PROPERTY OF TRIPLE  
C INC. ANY REPRODUCTION IN PART OR  
AS A WHOLE WITHOUT THE WRITTEN  
PERMISSION OF TRIPLE C INC. IS PROHIBITED.

DIMENSIONS ARE IN INCHES TOLERANCES: FRACTIONAL $\pm 1/16$ ANGULAR: MACH $\pm 1$ BEND $\pm$ TWO PLACE DECIMAL $\pm 010$ THREE PLACE DECIMAL $\pm 005$	
MATERIAL	---
DO NOT SCALE DRAWING	

NAME	DATE
DRAWN HEATH	1/13/2012
PART #	FP-BD22-3
ASM #	
COMMENTS:	
HINGE TUBE, MAIN BD220 WLDMT.	

P.O. BOX 248, SABETHA, KS 66534	
<b>TRIPLE C</b> INC.	
SIZE <b>A</b>	DWG. NO. <b>20-1122 C</b>
SCALE: 1:2	WEIGHT: 81.53 LBS.
SHEET 1 OF 1	